

*Range*

**MONOGRAM STEEL**



**PRESS**

**EXPORT**

01.01.2025



## Range

# MONOGRAM STEEL

MONOGRAM STEEL is a modern dining table in Scandinavian style. The practical and narrow design of the steel leg ensures that there is room for chairs all around the table.

### Designed by

Cecilie Kamp



### This range include

Dining tables | Coffee tables

## Features



### Design elements

Choose between different designs both with and without extension.



### Custommade

In addition to our many standard sizes we can accommodate special requests.



### Wood colours

Choose between more than 10+ different wood colours in both ash and oak.



### Sustainable choice

Solid wood furniture can last a lifetime with proper maintenance

## Social media

Follow and share with us on Instagram, Pinterest & LinkedIn.

 @kristensenfurniture | #kristensenfurniture

 kristensenfurniture | Kristensen & Kristensen

 Kristensen & Kristensen | #kristensenfurniture

## Pricelist- and imagebank

On our Collection-site you as a retailer always have access to the latest pricelists and hundreds of high resolution images and videos - **Free to use in your marketing!**

If you do not have a password yet, please contact the Kristensen sales office in Denmark.

### LINK:

[collection.kristensen.com](https://collection.kristensen.com)

# PRICELIST

## Round dining table (undivided)



Round dining table (undivided)			
Description	Item no.	Price (EURO)	
		Ash	Oak
<b>3 CM PLATE (H74 cm)</b>			
Ø160	Round undivided	MGS3H-160	
Ø150	dining table	MGS3H-150	
Ø140	(not extedable)	MGS3H-140	
Ø130	with 3 cm	MGS3H-130	
Ø120	top plate	MGS3H-120	
Ø110		MGS3H-110	
Ø100		MGS3H-100	
<b>4 CM PLATE (H75 cm)</b>			
Ø160	Round undivided	MGS4H-160	
Ø150	dining table	MGS4H-150	
Ø140	(not extedable)	MGS4H-140	
Ø130	with 4 cm	MGS4H-130	
Ø120	top plate	MGS4H-120	
Ø110		MGS4H-110	
Ø100		MGS4H-100	

Brushed stainless steel legs = +10%

All prices are purchase prices in Euro.

We accept no liability for any errors or omissions.

**kristensen:kristensen®**

All rights reserved Kristensen & Kristensen A/S

3 / 10

# PRICELIST

Round dining table (devided)



Dining table (extendable)						
Description	3 cm thick topplate (H74 cm)			4 cm thick topplate (H75 cm)		
	Item no.	Price (EUR)		Item no.	Price (EUR)	
		Ash	Oak		Ash	Oak
Ø180	MGS3M-180			MGS4M-180		
Ø170	MGS3M-170			MGS4M-170		
Ø160	MGS3M-160			MGS4M-160		
Ø150	MGS3M-150			MGS4M-150		
Ø140	MGS3M-140			MGS4M-140		
Ø130	MGS3M-130			MGS4M-130		
Ø120	MGS3M-120			MGS4M-120		
Ø110	MGS3M-110			MGS4M-110		
Ø100	MGS3M-100			MGS4M-100		

\* Comes with 2 support legs \*\* Comes with 1 support legs

Leaf for extendable dining table						
Description	3 cm thickness			4 cm thickness		
	Item no.	Price (EUR)		Item no.	Price (EUR)	
		Ash	Oak		Ash	Oak
Ø180	leaf 50x180 cm	MGT3-180		MGT4-180		
Ø170	leaf 50x170 cm	MGT3-170		MGT4-170		
Ø160	leaf 50x160 cm	MGT3-160		MGT4-160		
Ø150	leaf 50x150 cm	MGT3-150		MGT4-150		
Ø140	leaf 50x140 cm	MGT3-140		MGT4-140		
Ø130	leaf 50x130 cm	MGT3-130		MGT4-130		
Ø120	leaf 50x120 cm	MGT3-120		MGT4-120		
Ø110	leaf 50x110 cm	MGT3-110		MGT4-110		
Ø100	leaf 50x100 cm	MGT3-100		MGT4-100		

Brushed stainless steel legs = +10%

All prices are purchase prices in Euro.

We accept no liability for any errors or omissions.

**kristensen:kristensen®**

All rights reserved Kristensen & Kristensen A/S

4 / 10

# PRICELIST

## Round coffee table



Price: Round coffee table (H: 52 cm, plate thickness 3 cm)			
Size (cm)	Item no.	Price (EURO)	
		Ash	Oak
Ø120	MGS3C-120		
Ø100	MGS3C-100		
Ø90	MGS3C-90		
Ø80	MGS3C-80		

Brushed stainless steel legs = +10%

All prices are purchase prices in Euro.

We accept no liability for any errors or omissions.

# PRICELIST

## Round bar table



Bar Table		
W/leg 22, H92 cm, plate thickness 3 cm		
Ø (cm)	Price (EURO)	
	ASK	EIK
120		
100		

Brushed stainless steel legs = +10%

All prices are purchase prices in Euro.

We accept no liability for any errors or omissions.

# WOOD COLOURS



## Images for guiding purpose only!

The wood structure and colour will vary from ash and oak.

We therefore recommend using the wood samples/exhibition furniture to get a more accurate impression.



**ASH C3 / OAK C3**  
Lacquered

We treated this wood with lacque.

**C3 are only made for products without patination.**



**ASH C4 / OAK C4**  
Natural oiled

We treated this wood with our 'Natural oil'.



**ASH C6 / OAK C6**  
White oiled

We treated this wood with our 'White oil'.



**ASH C8 / OAK C8**  
Soaped

We treated this wood with soap.



**ASH C11 / OAK C11**  
Dark grey oiled

We treated this wood with our 'Black oil'.



**ASH C12 / OAK C12**  
Antique brown oiled

We treated this wood with our 'Antique brown oil'.



**ASH C13 / OAK C13**  
Light grey oiled

We treated this wood with our 'Light grey oil'.



This colour is unfortunately not possible on these products!

**ASH C14 / OAK C14**  
Black stained & oiled

We treated this wood with black stain, and treated it with a wax oil.

**C14 is for legs and storage furniture only!**



**ASH C15 / OAK C15**  
Mocca brown oiled

We treated this wood with our 'Mocca brown oil'.



**ASH C16**  
Warm white oiled

We treated this wood with our 'Warm white oil'.

**C16 is only for ash**



**ASH C20 / OAK C20**  
Grey brown oiled

We treated this wood with our 'Grey brown oil'.



**ASH C44 / OAK C44**  
Black matt lacquered

We treated this wood with black stain, and treated it with matt lacque.

**C44 is only for plates and can only be made for products without patination.**



For more information about maintenance, please visit our website:  
[WWW.KRISTENSEN.COM](http://WWW.KRISTENSEN.COM)



We also offers our own repairoils for our products  
- contact us if you need a pricelist.

**Brushed stainless steel legs = +10%**

All prices are purchase prices in Euro.

We accept no liability for any errors or omissions.

**kristensen:kristensen®**

All rights reserved Kristensen & Kristensen A/S

7 / 10

## WOOD FINISH



**UP**

**Without patination**

The wood is planned and sanded to achieve a smooth surface.

*With few and smaller knots.*

**Storage furniture can only be made with this finish!**

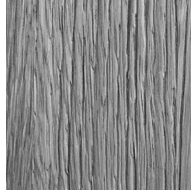


**SC**

**Soft Cracks**

Naturally occurring cracks are made more visible which gives a rustic look with cracks in the surface.

*May contain more and larger knots.*



**RL**

**Raw Look**

We brush off the layer of softer wood which gives a look of wood that has been roughened by natural wear.

*May contain more and larger knots.*



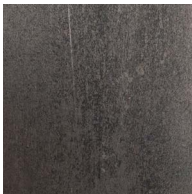
**FK**

**Filled Knots**

The knots are filled and the wood is planned and sanded to achieve a smooth surface.

**Only for OAK!**

## STEEL COLOUR & FINISH



**A**

**Industrial steel**

Industrial steel has a raw and matte appearance with shades of colors emerged during casting.



**B**

**Black painted steel**

Black painted steel has a graphical and simple look, that fits nicely in most homes.



**C**

**Brushed stainless steel**

Brushed, stainless steel has an elegant appearance with a uniform finish created by hand.

**Extra cost!**

## EDGE PROFILES



**1**

**Harlekin edge**



**2**

**Arched edge**



**3**

**Rounded edge**



**4**

**Straight edge**

**Brushed stainless steel legs = +10%**

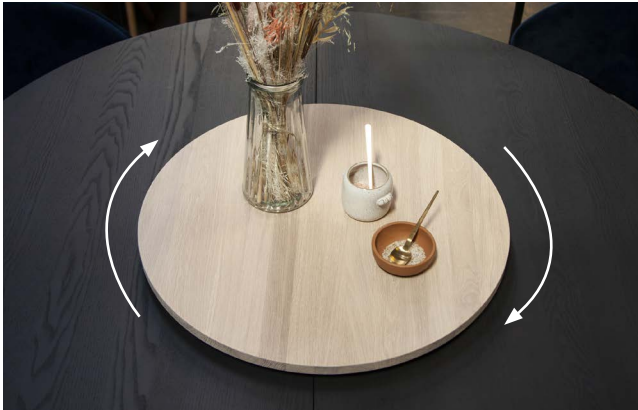
*All prices are purchase prices in Euro.*

*We accept no liability for any errors or omissions.*



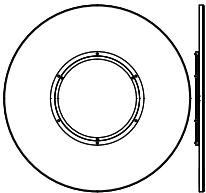
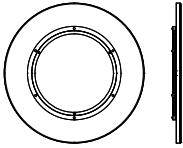
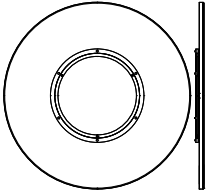
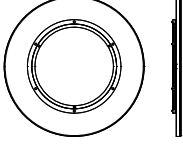
# PRICELIST

*Lazy Susan – turntable (rotating tray)*



The plate has a turning function.  
The product can be used with all our round dining tables.



Price: LAZY SUSAN, plate thickness 2 cm				
description	item no.	measure (cm)		price (EUR)
		D	H	
 Lazy Susan turning plate in ASH	LAZY-80	80	4	
 Lazy Susan turning plate in ASH	LAZY-60	60	4	
 Lazy Susan turning plate in OAK	LAZY-80	80	4	
 Lazy Susan turning plate in OAK	LAZY-60	60	4	

Edge profile for  
LAZY SUSAN



4  
Straight edge

Ash is standard - Oak + 25%

All prices are purchase prices in Euro.

We accept no liability for any errors or omissions.

# CONTACT

---

## CUSTOMISED TABLES

We are able to produce all our table types in special sizes. Furniture in special sizes requires special handling both in terms of manual handling, new drawings, machine settings and packaging. We therefore include a sur-charge for products in special sizes, whether the product will be larger or smaller. If you want a table in a smaller size e.g, the price is added 15% on the price of the nearest standard size.

*Contact us for more information!*

### Agent, Norway

Lennarth Gryting

—

✉ lg@kristensen.dk

☎ +47 922 95 400

### Agent, Finland

Jokko Salmevaara

—

✉ jokko.salmevaara@boknas.fi

☎ +358 401 958 886

### Sale, Sweden

Anne Moberg

—

✉ am@kristensen.dk

☎ +46 707580279

### Agent, UK

Brendan Brett

—

✉ kristensen@theukagency.co.uk

☎ +44 77 34 265 599

## Head office, Denmark

**PHONE:**

+45 75470303

**ORDER MAIL:**

order@kristensen.dk

**ADDRESS:**

Kristensen & Kristensen A/S  
 Storstrømsvej 44  
 6715 Esbjerg N  
 DK - Denmark

**TERMS & CONDITIONS**

—

Can be sent via email by  
 request – contact:

**kristensen@kristensen.com**

**WEBSITE:**

www.kristensen.com

**CLAIMS:**

claim@kristensen.dk

**MAIL:**

kristensen@kristensen.dk

**FAX:**

+45 75470304

